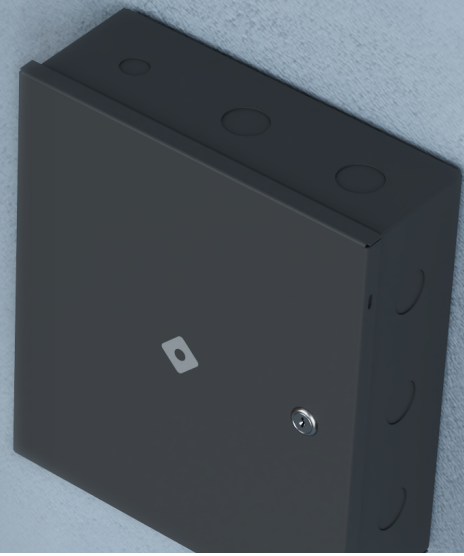




DC20 4-Door Access Control Unit

Cloud-managed, secure by default, and built for enterprise scalability, the DC20 pairs seamlessly with Rhombus Access Control devices and existing door hardware.

Starting at \$1,299 (MSRP USD)



Technical Specifications

Dimensions: 330mm (13.0in) x 313 mm (12.3in) x 113mm (4.4in)

Power Input: 12VDC, 90W

Relays: 4 Door Relays, 2 Aux Relays

Inputs: 4 REX and 4 DPI (Supervised), 1 AUX input (Unsupervised)

Connectivity: Ethernet 10 / 100Mbps RJ45

Operating Temperature: 32°F - 122°F (0°C - 50°C)

Mounting: Wood / drywall screws

In the Box: 2 Enclosure keys, mounting screws, user manual

Rhombus 10-year Warranty included

The New Standard in Enterprise Access Control



Easy to Install & Scale

Straightforward installation with unified system management across all doors and locations.



Reliable Cloud Management

Manage doors and access permissions in real-time from anywhere in the world.



Enterprise Reliability

Works with existing hardware and operates during network or power outages.



Rhombus Platform Enabled

Seamlessly integrates with all Rhombus security cameras, sensors, and alarms.